



Heat Recovery Control Systems

”

HEAT RECOVERY

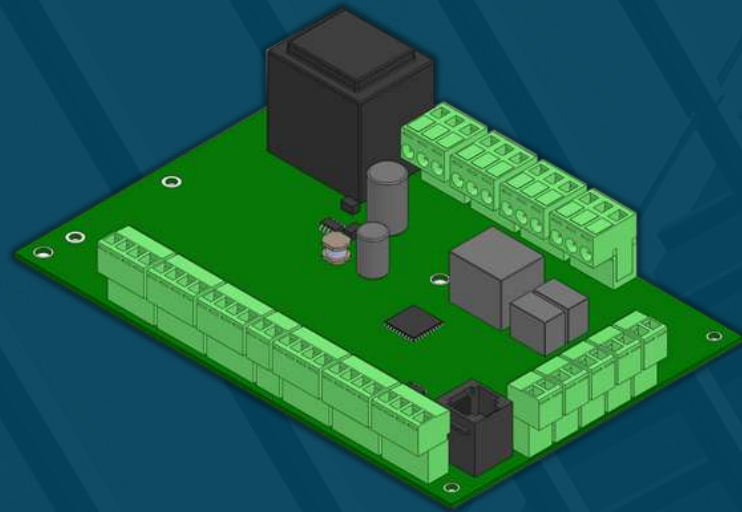
THE HEAT RECOVERY CONTROL SYSTEMS DEVELOPED BY OUR COMPANY PROVIDE ALL THE FUNCTIONS AND FEATURES EXPECTED FROM A HEAT RECOVERY DEVICE.



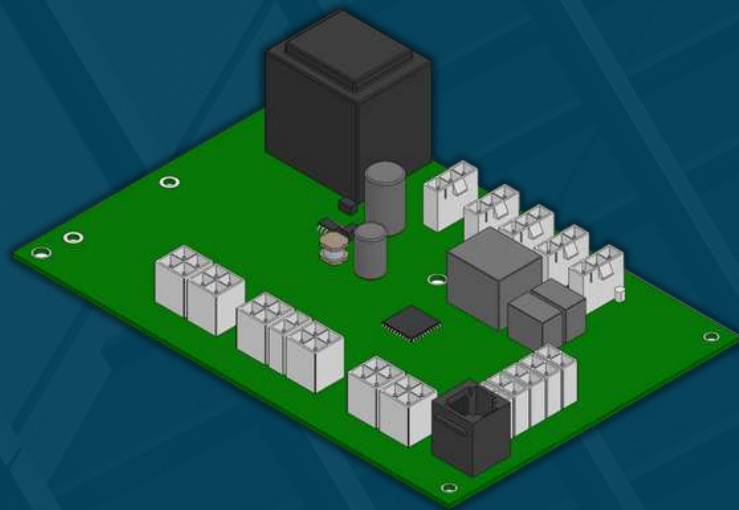
Destech-HRC Controller

Since 2011, Destek Otomasyon has been offering the Destech-HRC Control Unit, which is included in its product range and designed by itself, to the use of all manufacturers in order to be an innovative and solution partner to the Heating - Cooling - Ventilation sector.

Destech-HRC Controller



(With Terminal)



(With Socket)



Constant Flow



UVL Control (UVL Control Functions)



Water Coil Control Functions



DX System (DX Functions)



By Pass Functions



CO2, Humidity, UVL (Sensor Options)



4 Different Timers Each 7 Days



Electrical Heater Functions



2X Filter Functions



Frost Protection

Destech-HRC Controller Highlights

Human Machine Interfaces

Destech-HRC Touch Panel



Touch Screen



2X MODBUS



Service Menu



Automatic Screen Management



4 Different Timers
Each 7 Days

Destech-HRC Basic Panel Pro



Mini Screen

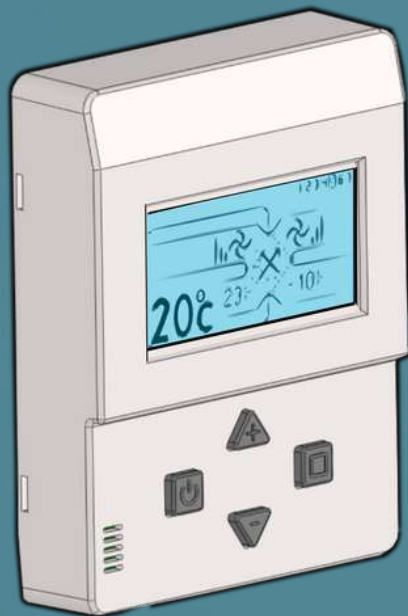


Service Menu



Compact Design

Destech-HRC Digital Panel



Automatic Screen Management



4 Different Timers Each 7 Days



Service Menu

Destech-HRC Basic Panel



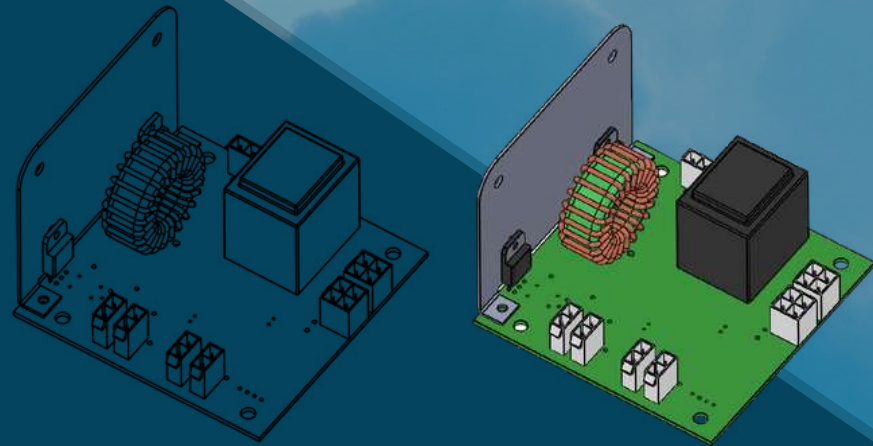
Basic Design



Service Menu

Sensor Group / Accessories

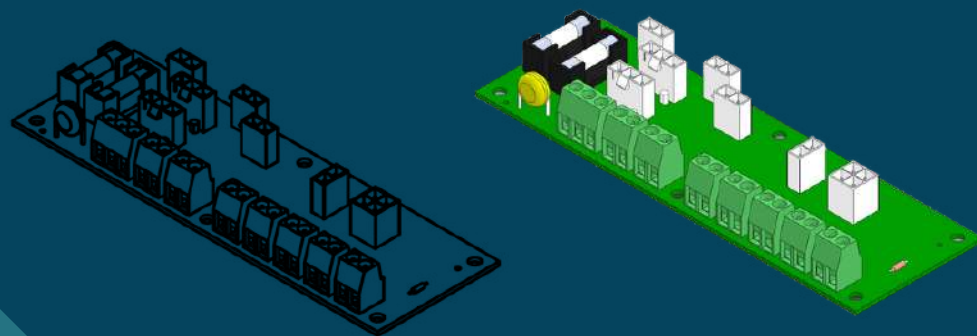
Destech-HRC AC Fan Speed



For AC type fans, speed control can be done with 0~230V voltage control. Therefore, the PWM output of the control card needs to be converted at 0~230V.

"AC Fan Speed Control Board" has been produced for this purpose.

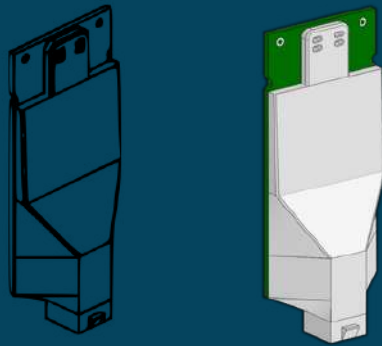
Destech-HRC Terminal Board



It is used with a socket connected control card. The use of some functions of the control card (Boost function, BMS function, Modbus function, etc.) depends on the end user's request. External equipment connection is required to use these functions.

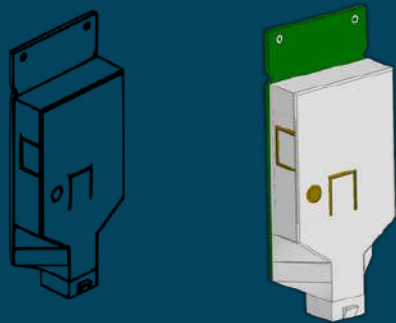
The end user will be able to easily make the desired connection to the control card with this.

Destech-HRC Humidity Sensor



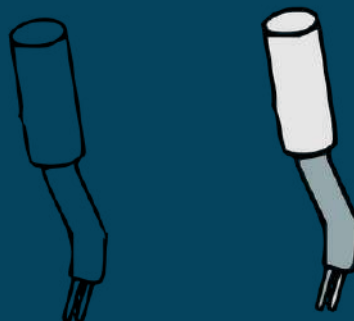
It is the sensor used to measure the humidity of the air. The control board is calibrated according to this sensor. Channel type is suitable for use.

Destech-HRC CO₂ Sensor



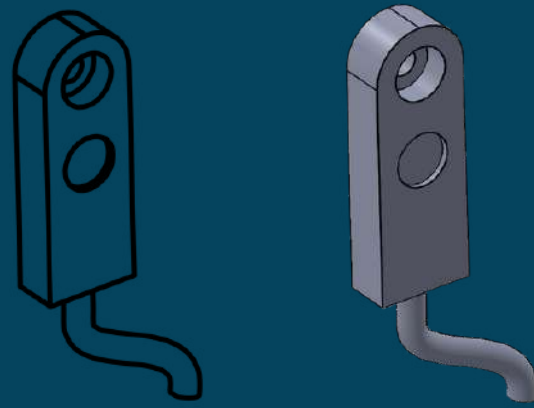
It is the sensor used to measure the amount of carbon dioxide (CO₂) in the air. The control board is calibrated according to this sensor. Channel type is suitable for use.

Destech-HRC NTC 10K Thermistor (10cm Cable)



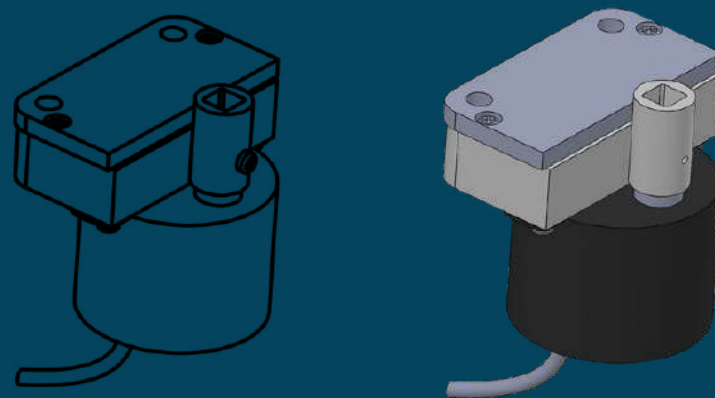
NTC 10k Ω (@25°C) type sensor used for air temperature measurement. The control board is calibrated according to this sensor. Channel type is suitable for use.

Destech-HRC UVL Sensor



The sensor that warns in case of malfunction of the ultraviolet lamp.

Destech-HRC By-Pass Motor



The activator that opens and closes the bypass valve.



www.destechhrc.com

Destek Otomasyon, which started its commercial activities in 2009 with its expert staff and devoted engineers, aims to meet the needs and expectations of its business partners in its projects in the best way. Since the day it was founded, it has been continuing its activities in line with this purpose.



/Destek Otomasyon



/Destek Otomasyon



@destekotomasyon



/destekotomasyon



+90 232 453 70 07

+90 232 458 70 08



Optimum Cost
Effective Solutions

www.destekotomasyon.com